



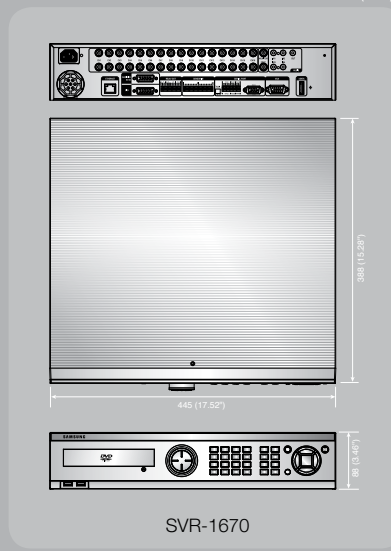
Premium Digital Video Recorder SVR-1670/490



Specifications

	SVR-1670	SVR-490
DISPLAY		
Video	16 composite video 0.5-2 Vpp, 75 ohm automatic termination	4 composite video 0.5-2 Vpp, 75 ohm automatic termination
Resolution	NTSC : 704 x 480 PAL : 704 x 576	NTSC : 704 x 480 PAL : 704 x 576
Frame Rate	NTSC : 480fps PAL : 400fps	NTSC : 120fps PAL : 100fps
Live	Resolution NTSC : 704 x 480 PAL : 704 x 576	Resolution NTSC : 704 x 480 PAL : 704 x 576
Multi Screen Display	1 / 4 / 9 / 10 / 16	1 / 4
PERFORMANCE		
Compression	H.264 PAL	H.264 PAL
Record Rate	Up to 120fps@704 x 480 (4CIF) Up to 100fps@704 x 576 (4CIF) Up to 240fps@704 x 240 (2CIF) Up to 200fps@704 x 288 (2CIF) Up to 480fps@352 x 240 (CIF) Up to 400fps@352 x 288 (CIF)	Up to 120fps@704 x 480 (4CIF) Up to 100fps@704 x 576 (4CIF) Up to 120fps@704 x 240 (2CIF) Up to 100fps@704 x 288 (2CIF) Up to 120fps@352 x 240 (CIF) Up to 100fps@352 x 288 (CIF)
Recording	Mode Manual, Schedule, Event, Emergency	Mode Manual, Schedule, Event, Emergency
Overwrite Modes	Continuous	Continuous
Pre-alarm	Up to 5 sec.	Up to 5 sec.
Post-alarm	Up to 60 sec.	Up to 60 sec.
Search & Playback	Search Mode Date/time, Event, Calendar, Text (SVM-S1)	Date/time, Event, Calendar, Text (SVM-S1)
Playback Function	REW, FWD, Frame advance (Control keys and jog shuttle)	REW, FWD, Frame advance (Control keys)
Transmission Speed	Up to 40Mbps	Up to 40Mbps
Bandwidth Control	Automatic	Automatic
Multi Stream	H.264 (Dual Stream) / JPEG	H.264 (Dual Stream) / JPEG
Max. Remote Users	10 Simultaneously	10 simultaneously
Protocol Support	TCP/IP, ARP, ICMP, DHCP, PPPoE, UDP, SMTP, FTP, SNMP, HTTP, DNS, DDNS, RTP, RTSP, SOAP	TCP/IP, ARP, ICMP, DHCP, PPPoE, UDP, SMTP, FTP, SNMP, HTTP, DNS, DDNS, RTP, RTSP, SOAP
Monitoring	CMS Software(SVM-S1), Built-in web server	CMS Software(SVM-S1), Built-in web server
Maximum Capacity	Up to 16TB using external storage option	Up to 10TB using external storage option
Internal HDD	Up to 4 SATA HDDs	Up to 2 SATA HDDs (In case of DVD writer use, 1 SATA HDD is available)
External HDD	Up to 1 expansion bay	Up to 1 expansion bay
DVD Writer (Back up)	DVD-R(+/-) / CD-R(+/-)	DVD-R(+/-) / CD-R(+/-)
USB (Back up)	2 External USB Ports	2 External USB Ports
File Format (Back up)	AVI, Proprietary format (Include viewer) / JPEG (CMS)	AVI, Proprietary format (Include viewer) / JPEG (CMS)
Security	Password Protection 1 Admin, 10 User	1 Admin, 10 User
Data Authentication	Watermark	Watermark
INTERFACE		
VGA	Analog RGB 800 x 600, 1024 x 768, 1280 x 1024 resolution	Analog RGB 800 x 600, 1024 x 768, 1280 x 1024 resolution
Monitors	Main Composite 1 BNC, 1 Vp-p, 75 ohm, Multi-screen, Menu, Playback Sub Composite 1 BNC, 1 Vp-p, 75 ohm Loop Outputs 16 Composite video 1 Vpp, 75 ohm	1 BNC, 1 Vp-p, 75 ohm, Multi-screen, Menu, Playback N/A 4 Composite video 1 Vpp, 75 ohm
Inputs	16 Line in, 30K ohm	4 Line in, 30K ohm
Output	1 Line, 100K ohm	1 Line, 100K ohm
Audio	Compression ADPCM	ADPCM
Sampling Rate	16KHz	16KHz
Alarm	Inputs Terminal 16 inputs, NO/NC	Terminal 4 inputs, NO/NC
Outputs	Terminal 4 relay outputs, NO/NC	Terminal 2 relay outputs, NO/NC
Remote Notification	Notification via e-mail	Notification via e-mail
Ethernet	RJ-45 10/100/1000 Base-T	RJ-45 10/100/1000 Base-T
Serial Interface	RS-232C	RS-232C
PTZ Control Interface	RS-485/422	RS-485
USB	RS-485, Max. signal voltage ±12V	RS-485, Max. signal voltage ±12V
eSATA	2 USB 2.0 ports	2 USB 2.0 ports
Application Support	1 External SATA port	1 External SATA port
Supported	ATMP/POS, Remote controller	ATMP/POS, Remote controller
Protocols	Samsung Techwin, Pelco D, Pelco P, Pelco Coaxtron(Optional)	Samsung Techwin, Pelco D, Pelco P, Pelco Coaxtron(Optional)
GENERAL		
Electrical	Input Voltage 100 ~ 240V AC ±10%, 50/60Hz, Auto ranging Power Consumption Max. 60W (With 1X HDD) / Max. 85W (With 2X HDD)	12V DC Adapter (or 100 to 240 VAC ±10%; 50/60 Hz, Autoranging) Max. 45W (With 1X HDD) / Max. 60W (With 2X HDD)
Environmental	Operating Temperature +5°C ~ +40°C (+32°F ~ +104°F) Operating Humidity 0% ~ 60%RH	+5°C ~ +40°C (+32°F ~ +104°F) 0% ~ 60%RH
Mechanical	Dimensions (WxHxD) 445 x 88 x 388mm (17.52" x 3.46" x 15.28") Weight (4X Hard Disks) Approx. 10kg (22.05 lb) Rack Mount Kit For mounting one unit in an EIA 19 inch rack	350 x 88 x 400mm (13.78" x 3.46" x 15.75") Approx. 7kg (15.43 lb) N/A
Language	English, Spanish, French, German, Italian, Portuguese, Polish, Russian, Turkish, Japanese, Czech, Serbian, Swedish, Rumanian, Danish, Korean, Chinese, Taiwanese	English, Spanish, French, German, Italian, Portuguese, Polish, Russian, Turkish, Japanese, Czech, Serbian, Swedish, Rumanian, Danish, Korean, Chinese, Taiwanese

Dimensions



SAMSUNG TECHWIN CO., LTD.
145-3, Sangjiseon 1-dong, Jungwon-gu, Seongnam-si, Gyeonggi-do Korea 462-703
Tel : +82-31-740-8151-8 Fax : +82-31-740-8145
www.samsungcctv.com

SAMSUNG TECHWIN AMERICA, INC.
1480 Davies Mill Rd., Santa Ana, CA 92705, UNITED STATES
Tel: Fax : +1-977-213-1222 Fax : +1-310-632-2195
www.samsungcctvusa.com

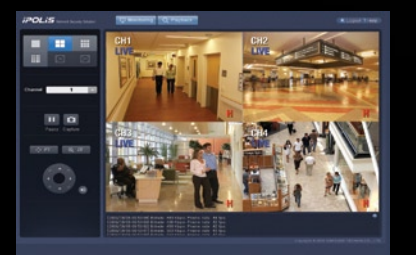
SAMSUNG TECHWIN EUROPE CO., LTD.
Samsung House, 1003 Hainwood Drive, Hainwood Business Park
Chertsey, Surrey, UNITED KINGDOM KT16 0PS
Tel : +44-1932-45-5300 Fax : +44-1932-45-5325

TIANJIN SAMSUNG TECHWIN OPTO-ELECTRONICS CO., LTD.
No.11, Wei 6 Street, Meiyu Electronic Industrial Park
Jingang Road, Tianjin, P.R. CHINA 300385
Tel : +86-22-23887788 Fax : +86-22-23887788

Outstanding Network Monitoring

Multi-Stream with H.264/JPEG

Built-in H.264 support provides simultaneous viewing of both H.264/JPEG video streams, wide selection of video resolutions, screen qualities, and frame rates for real-time monitoring are available to choose from. It supports the existing TCP connection method as well as RTP/UDP, RSTP, RTP and Multicast methods so that streaming data can be received through client programs

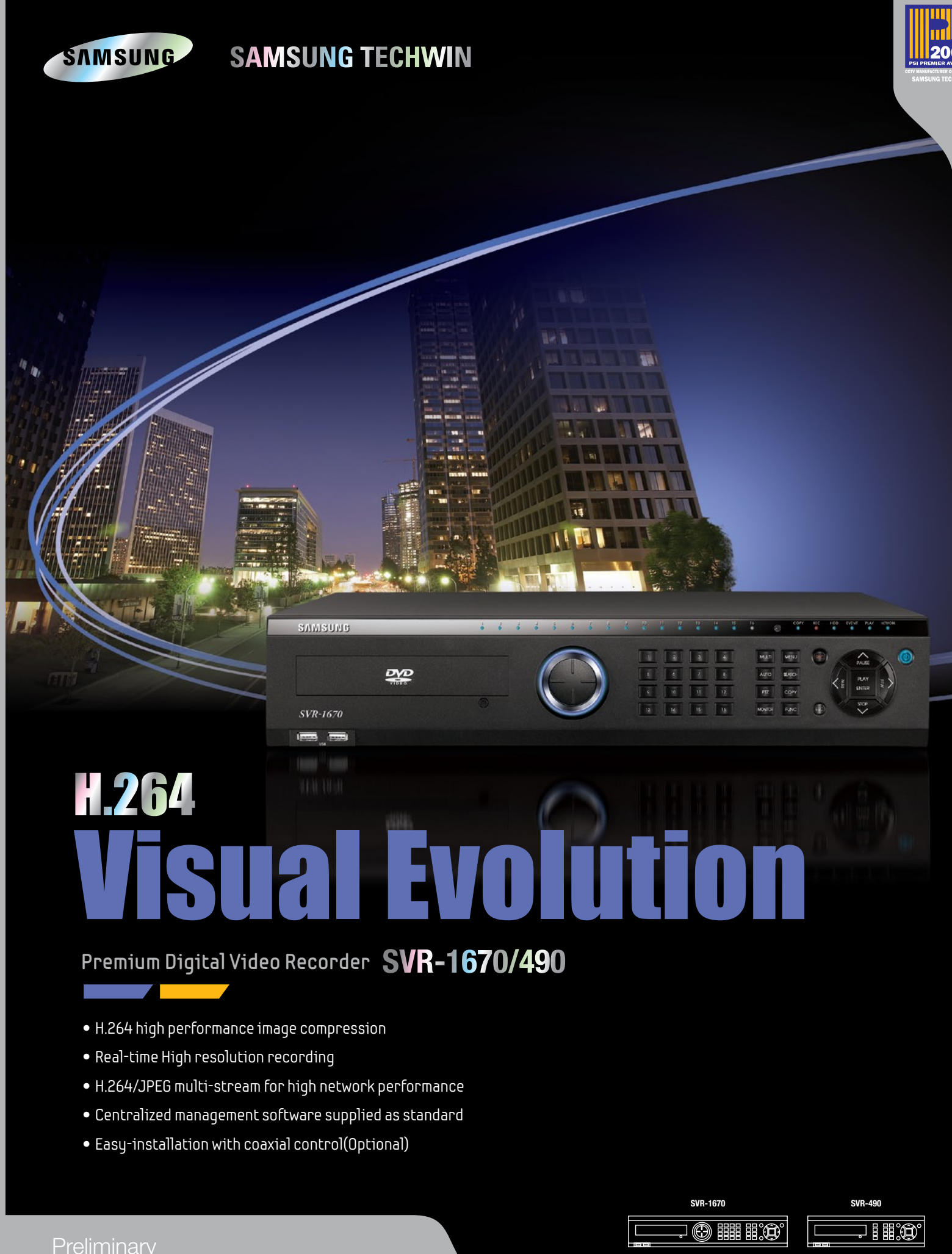


Samsung Video Management Software (SVM-S1)

The Samsung Techwin's exclusive CMS, a standard application software provided, can manage not only the SVR-1670/SVR-490(DVR), but a range of Samsung Techwin's network products simultaneously. It allows easy yet systemized operation of a variety of products' functions enabling the monitoring more reliable, faster and more efficient.

Anytime, Anywhere with Convenient Web viewer

The DVR has a built-in web server that enables users to monitor and playback DVR images through the Web viewer regardless of place and time.



SAMSUNG SAMSUNG TECHWIN

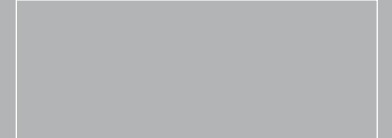
H.264 Visual Evolution

Premium Digital Video Recorder **SVR-1670/490**

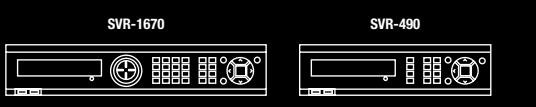
- H.264 high performance image compression
- Real-time High resolution recording
- H.264/JPEG multi-stream for high network performance
- Centralized management software supplied as standard
- Easy-installation with coaxial control(Optional)

Design and specifications are subject to change without notice.

■ DISTRIBUTED BY



LH-0909



Preliminary

www.samsungcctv.com

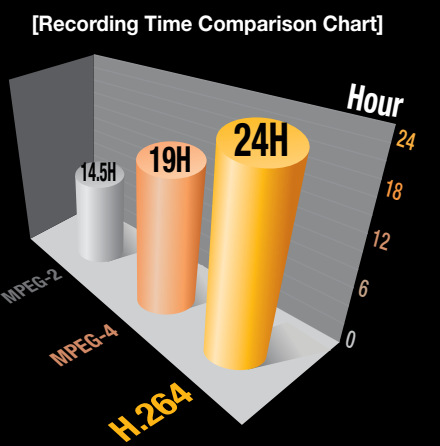
www.samsungcctv.com

Premium Digital Video Recorder
SVR-1670/490

H.264 DVR Recording System

H.264 High Resolution Technology

H.264 H.264 is the latest generation standard for video compression, the process of converting digital video into a format that takes up less capacity when it is stored or transmitted. Compared with standards such as MPEG-2 and MPEG-4 Visual, H.264 can deliver better image quality at the same bitrate, and a lower bitrate for the same image quality.



• At the same image size, quality and HDD size.
• Actual recording time will vary depending on the amount of motion and picture detail in the scene.



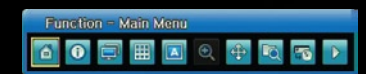
Premium Digital Video Recorder
SVR-1670

- H.264 high performance image compression
- 16 channels 480fps(N), 400fps(P) real-time recording
- H.264/JPEG multi-stream for high network performance
- Centralized management software supplied as standard

User Friendly Interface

Easy-to-use and convenient GUI

Pop-up style menu and GUI makes learning how to operate the SVR-1670/SVR-490 very easy, even for a digital equipment novice. The SVR-1670/490 comes with an infrared wireless remote control, and offers simple GUI and a mouse for experienced PC users.



Hot Function Menu

The graphic menu of the SVR-1670/490 has Hot Function icons to aid mouse users and to provide a better working environment.

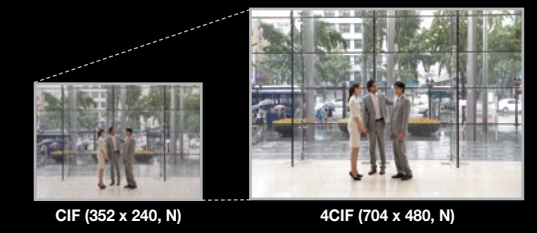
- PTZ Control & Preset Menus
- Default DVD & Simple USB Backup Capacity

Up to 18 Multiple Languages

The DVR provides multi-language for an easy and convenient user environment.

Real-time 4CIF Resolution Recording

4CIF SVR-1670/490 has applied a high speed data processing technology for all channel H.264 full-frame compression. It is possible to record and play 4CIF(704 x 480(N), 704x576(P)) level high resolution images. Especially, SVR-490 recording capabilities of 120fps allows up to 4cameras to be simultaneously recorded at full 4CIF resolution and in real-time.



Easy-Installation with Coaxial Control

COAX The SVR-1670/490 supports 16 PTZ camera control through coaxial cable. This function allows control signals to be sent over the video coaxial cable, eliminating the need for separate control wiring.



Slim Digital Video Recorder SVR-490

- H.264 high performance image compression
- 4 channels 120fps(N), 100fps(P) real-time recording (4CIF)
- H.264/JPEG multi-stream for high network performance
- Centralized management software supplied as standard

