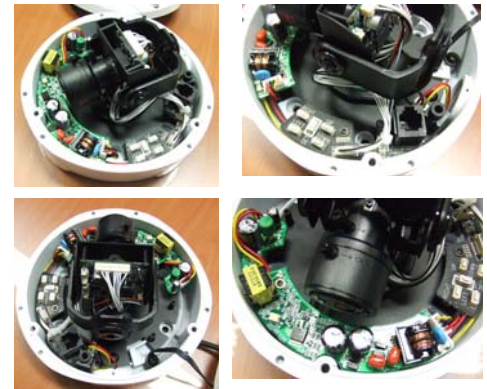
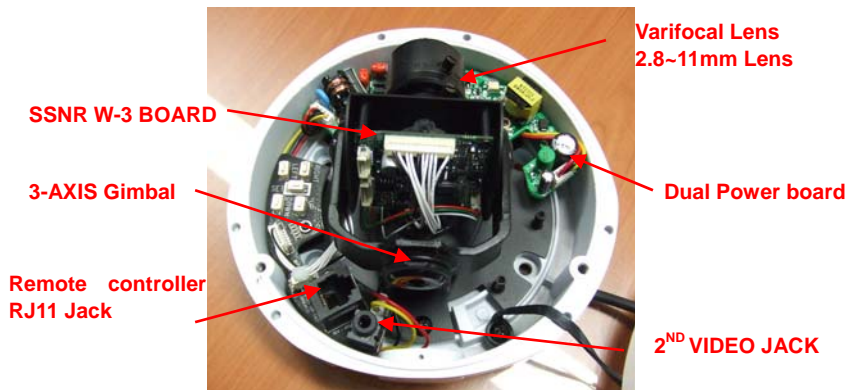


VD-V2811K(W3)/W

DNR Built-in Anti -Vandal Dome Camera



- 1/3" Sony Super HAD CCD
- Samsung Techwin WIII DSP Chip
- Super High Resolution, 540TVL
- Vandal Resistant Housing
- Digital Day/Night
- 100mm Polycarbonate Bubble
- HDD Storage saving with DNR (Digital Noise Reduction)
- 3- Axis gimbal Camera
- Selectable Gain Control / Electronic Shutter Control
- Motion Detection / Mirror Function / Privacy Function
- Selectable White Balance / O.S.D Menu
- Dual Voltage



Technical Specification

MODEL	VD-V2811(W3)/W
Image Sensor	1/3" Sony Super HAD CCD
Horizontal Resolution	540 TVL
Sensitivity (40 IRE @ F1.2)	0.3 Lux (Col), 0.1 Lux (Mono), 0.002 Lux
Lens	2.8-11mm DCAI/Varifocal (F1.2)
Effective Pixels (H x V)	752 x 582
Electronic Shutter Speed	1/50~1/100,000 Sec
Scanning System	2:1 Interlace
Synchronization	INT/LL Selectable
Frequency	Horizontal : 15.625KHz Vertical : 50.00Hz
Video Output	1.0Vp-p~75 Ω
S/N Ratio	>50dB (AGC Off)
Gain Control	OFF / LOW / MIDDLE / HIGH
White Balance	ATW / AWB / MANUAL (1800°K ~ 10500°K)
Day / Night	Auto
O.S.D	Yes, Built-In
Back Light Compensation	LOW / MIDDLE / HIGH / OFF Selectable
Motion Detection	ON / OFF
2nd Video	Available
Mirror	Built-In (Horizontal Image Inversion)
Sharpness	Selectable Range from 0 ~ 31
Privacy Function	ON / OFF
Iris Control	DC / VIDEO
Camera ID	Up To IS 15 Alphanumeric Characters
Construction	Aluminum Cast Dome With Polycarbonate Bubble
IP Rating	IP66
Operating Conditions	Temperature: -10°C ~ +50°C Humidity: 30 ~ 90% RH
Power Supply	DC 12V or DC 12V / AC 24V
Power Consumption	Max 3.5W
Dimensions (D x H)	145 x 100mm
Weight	1200g